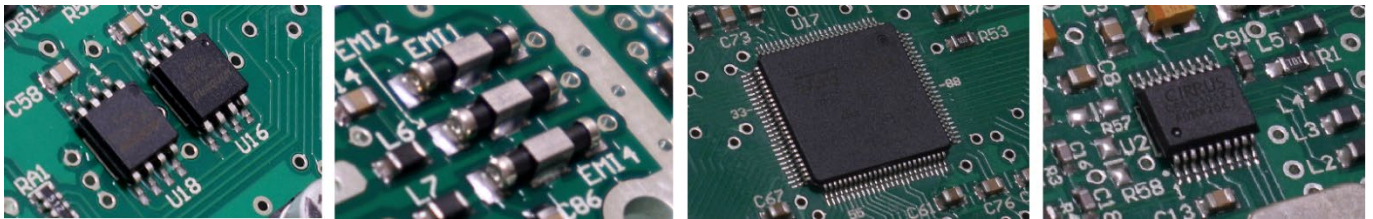




Experience Unparalleled Speed, Connectivity, Data Availability, and Security with the OIML Class III 10,000e Approved **10s** Stainless Steel Multi-Function Indicator, Specially Designed for Applications that Demand Nothing but the Best.

Key Features

- Designed According to IP66
- Completely Sealed and Extremely Heavy-Duty SUS304 Enclosure
- High-Speed 32-Bit Microprocessor
- 24-Bit A/D Converter
- Intelligent EMC-Protected Design
- Flexible Operation Parameters with Innovative Concepts and Algorithms
- Non-Resettable Alibi Memory



Efficient PLUs & Database

- 10 PLU Settings per Weight Unit for Each of the Weight & Quantity Check Limits, Preset Tare, Average Piece Weight
- 1,000 PLU Database for Customer and Product Codes + Descriptions
- 100 Production Settings PLU per Weight Unit
- Alibi Memory for up to 131,072 Individual Transactions
- User-Editable 4-Digit Short Notes to Transactions as Additional Remarks



Tri-Color Check Result Backlight for Enhanced Visibility

Versatility, Functionality, and Accuracy are all Built-In

10s Stainless Steel Multi-Function Indicator

Operation Functions & Features

- OIML Class III 10,000e Approved
- Extended Digital Indication Feature for 10x Higher Resolution Temporarily When Operated Under OIML Mode
- Static, Dynamic, Animal Weighing, Action-Tare-Memory (ATM), and Piece Counting Function
- Near Zero Weight Value in Dynamic Weighing to Prevent False Signal Output
- Weight and Quantity Check Mode
- Supports Single Range, Dual Range, and Dual Interval for Various Application Needs
- Various Tare Operations: Manual, Preset, Auto, Repetitive, and Continuous
- Configurable Delay Time Before Continuous Tare Action
- Adjustable Filter Settings: 9 Selectable Filter Strength Levels with 4 AD Conversion Speeds for Optimal Performance
- Supports Both Tension and Compression Load/Force Direction
- Comprehensive Numeric and Function Keyboard: Provides a Full Range of Input Options for Seamless Operation
- Barcode Scanner Integration: Allows Input of Tare, Zero, Print/M+ Key, Operator Number, Customer, and Product Codes for Quick Data Entry
- Real-Time Clock with Backup Battery: Maintains Accurate Timekeeping Even During Power Loss
- Watchdog System: Protects the Device from Damages Caused by Load Cell Short-Circuits
- Customizable Settings: Configurable Keypad, Check Result, and System Buzzer for Personalized User Experience

Management Features

- Flexible Machine and Operator Management: Configurable Machine ID, Machine Group, and Operator Number for Easy Identification and Tracking
- Comprehensive Reporting: Daily, Monthly, Specific Period, and All Report Output Options for Customized Data Analysis
- Multi-Criteria Search: Supports Multiple Search Criteria for Efficient Report Generation
- PC Integration: Inquiry, Setting, and Execution Commands Can Be Initiated from a PC for Centralized Management
- Check Result Control for Data Accumulation, Printout, and Output
- Keypad Lock Function: Prevents Unauthorized Access and Ensures Data Security
- Database Output Format: All Current Operation Results Can Be Output in Database Format for Seamless Data Management, Processing, and Analysis
- Label Printer Compatibility: Supports Various
 - Datsc: LP-50
 - TSC: TDP/TTP-225, TDP/TTP-247, TDP/TTP-345, DH/TH220 Series, DH/TH240 Series, DH/TH340 Series
 - Sbarco: All Models with Serial Port
- Expiry Duration Input and Output: Supports Input and Output of Product Expiry Duration for Easy Tracking and Management

Secure & Traceable Data

- Non-Resettable Alibi Memory for up to 131,072 Individual Transactions
- Each Individual Transaction Includes 23 Distinct Results and Operational Settings
- Easy Data Retrieval Locally or Remotely
- Comprehensive Management Reports for Productivity Analysis

Sys. Seq	Opr	Mode	Mac	MacGp	Date	Time	Ccode	C Description	Pcode	P Description	Gross	Tare	Net	Unit	@WT	@WT Unit	QTY	Low	High	Check Target	Result	Note
0	3	1	11	22	4/11/2021	16:44:16	Customer 1	Customer Description 1	Product 1	Product Description 1	5.000	1.000	4.000	kg	1.00000	g	3,999	1.000	2.000	pcs	Above	1228
1	3	1	11	22	4/11/2021	16:44:22	Customer 1	Customer Description 1	Product 1	Product Description 1	10.000	5.000	5.000	kg	1.00000	g	4,999	1.000	2.000	pcs	Above	1228
2	3	0	11	22	4/11/2021	16:44:30	Customer 2	Customer Description 2	Product 2	Product Description 2	10.000	1.100	8.900	kg				2.000	3.000	kg	Above	1228
3	3	0	11	22	4/11/2021	16:44:34	Customer 2	Customer Description 2	Product 2	Product Description 2	9.995	1.100	8.895	kg				2.000	3.000	kg	Above	3680
4	3	0	11	22	4/11/2021	16:44:42	Customer 3	Customer Description 3	Product 3	Product Description 3	9.975	1.200	8.775	kg				3.000	4.000	kg	Above	3680
5	3	0	11	22	4/11/2021	16:44:45	Customer 3	Customer Description 3	Product 3	Product Description 3	4.995	1.200	3.795	kg				3.000	4.000	kg	Accept	3680

Alibi Management Report

Versatility, Functionality, and Accuracy are all Built-In

10s Stainless Steel Multi-Function Indicator

Achieve Higher Efficiency & Reduced Human Error

- Lightning-Fast Cortex M4 32-Bit 168MHz Microprocessor
- Instantly Employ and Shift Operation Parameters with Keyboard, Barcode Scanner, and Computer
- Check Limits Validation Control for Accurate Accumulation Results
- Large LCD Digits and Tri-Color Backlights Ensure Clear Visibility

Connectivity

- Maximum 5 x Independent Bi-Directional Configurable Communication Ports
- Standard: 2 x RS232
- Optional: TTL, RS485/Wi-Fi, and Bluetooth
- Optional Built-In 4-Channel Control Relay Board
- Optional 3 x External Input



Communication & Output Formats

- Supported Peripherals: Computers, Smart Devices, Barcode Scanners, Dot-Matrix/Thermal Printers, Label Printers, Remote Displays, ERP Systems, and More
- Wi-Fi Working Modes: Supports Both AP and Station Modes for Flexible Connectivity Options
- Wi-Fi Protocols: Supports Both TCP and UDP as Server and Client for Efficient Data Transfer
- Output Formats: Offers a Range of Output Formats for Maximum Flexibility Including:
 - 2 Predefined Landscape Formats
 - 3 Predefined Portrait + 1 Customizable Format
 - 10 Predefined + 1 Customizable Continuous and Interval Outputs

Scan and Search

An Intelligent Search begins with a single scan of a Customer/Product Code. Depending on the settings, the scanned code is searched in either the Production Settings PLU or the Customer and Product Code & Description Databases.

If the scanned code exists:

1. In the Production Settings PLU: The Corresponding Settings and Operational Parameters for that PLU will be Triggered automatically.
2. In the Product Code & Description Database: The Corresponding Code & Description will be applied automatically.

Options

- Built-In RS485 or Wi-Fi Communications Module
- Built-In Bluetooth 2.0 or 4.0 BLE Module
- Built-In 4-Channel Control Relay Board
- Built-In External Input Set (3 Inputs)
- CT-10 Bluetooth Barcode Scanner
- Serial Cable Barcode Scanner



Versatility, Functionality, and Accuracy are all Built-In

10s Stainless Steel Multi-Function Indicator

Specifications

OIML Approved Class / Accuracy	Class III, 10,000e
Approved Minimum Input & Dead Load	<ul style="list-style-type: none">• 5% of Emax ≤ Dead Load = 0.5μV/e• 0% ≤ Dead Load < 5% of Emax = 1.5μV/e
Capacity and Readability	Free Setting
Weighing Range	Single Range, Dual Range, Dual Interval
Weight Units	kg, g, lb
Digits & Indications	<ul style="list-style-type: none">• Six 37.5mm HTN Bold Type Wide Angle LCD Numeric Digits• Gross, Net, Stable, Zero, Weight Unit, Weighing Range, Battery Level, M+, Product & Customer Code, Pre-Tare, Alibi, Lower Case, Customized Setting Indicator, Number of Pieces Indicator
Load Cell Connection	<ul style="list-style-type: none">• Excitation Voltage = 5V DC• Support both 4-wire & 6-wire Load Cells• Maximum Load Cell Connection: -<ul style="list-style-type: none">- Approved = 4 x 350Ω or 8 x 700Ω Load Cells- Non-Approved = 12 x 350Ω or 24 x 700Ω Load Cells
Micro Processor	32-bit High Speed & High EMC Immunity
A/D Converter & Internal Resolution	<ul style="list-style-type: none">• 24 bit Low-Noise Delta to Sigma ($\Delta-\Sigma$)• 4.0 million Counts at 20mV• Minimum input per d = 0.05μV
AD Conversion Speed	15, 30, 60, 120 times/second Selectable
Max. Tare Range	-Max or -Max ₁ (Subtractive Tare)
Calibration Methods	<ul style="list-style-type: none">• 2 Span Points Calibration (Linearity Calibration), or• 1 Span Point Calibration (User Calibration), or• Numeric Calibration Through Keyboard
Power Source	<ul style="list-style-type: none">• Built-in Rechargeable 6V, 5AH Battery• External = 12VDC, 1A Power Adaptor
Accessories	<ul style="list-style-type: none">• Stainless Steel Wall / Desk Mount Holder• Universal Power Adaptor
Packing	<ul style="list-style-type: none">• Individually Packed. 31.5 x 31 x 14.5cm. Net/Gross = 2.50/3.55kg• Four Units in a Shipping Carton. 65.5 x 32 x 33.5cm. Net/Gross = 10.00/15.00kg
Operation Environment	-10 to 40°C. Non-condensed. R.H. ≤ 85%

In the interest of improvement, specifications may change without notice



Fidelity Measurement Company Limited

www.fm.com.tw

info@fm.com.tw

REV.: 10s/26/05/03